

### 19 Vivaldi Street Hammond Park WA

3  2  2 

Easy Living in Popular Hammond Park in this 3x2 on Cottage Block

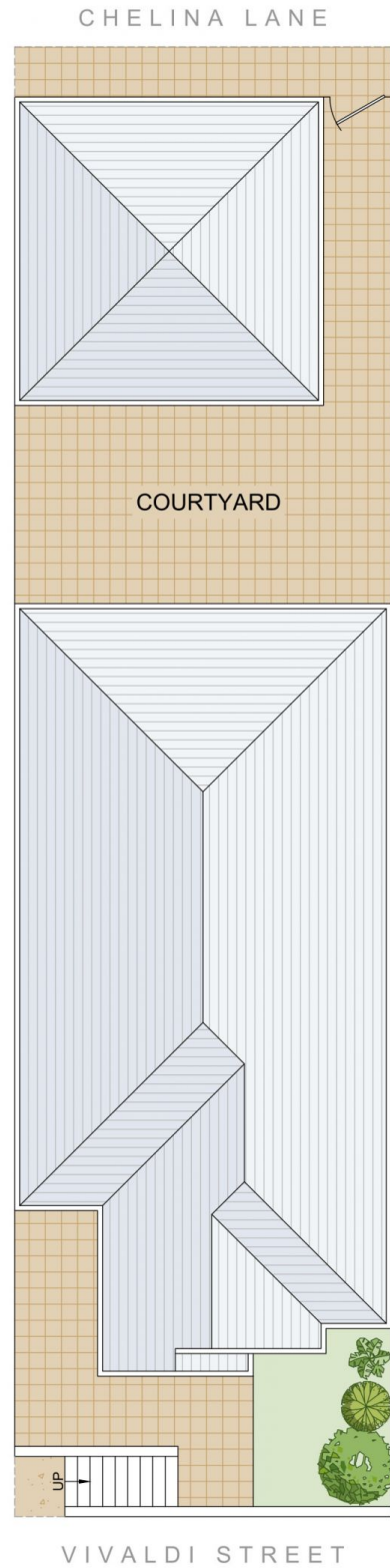
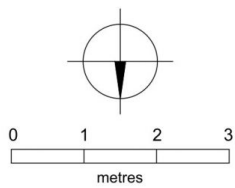
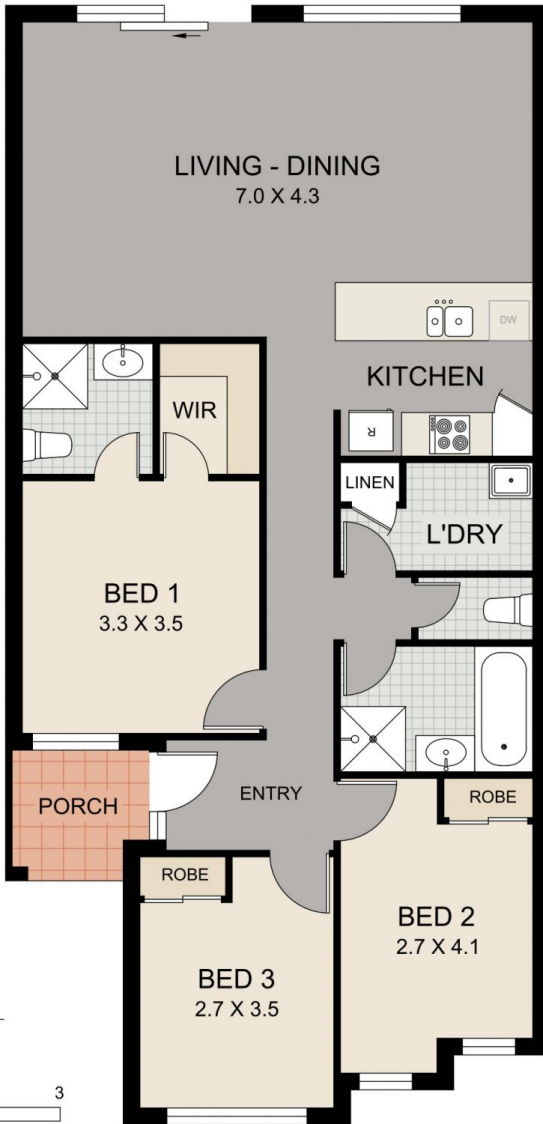
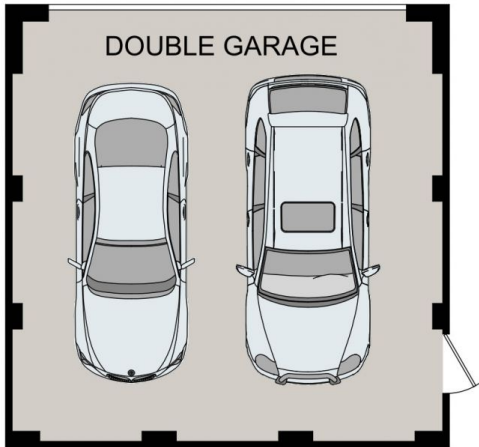
Fast growing Hammond Park is a hot spot for first home buyers and is rising in popularity for its convenient location to schools, shops and more. Nestled in a series of cottage style homes is 19 Vivaldi Street. Perfect for singles or couples as a first home or downsizer, this three bedroom property features a large central living space with split system air conditioning for comfort and courtyard for summer entertaining. Easy care flooring and sky high ceilings as well as security sliding door give a sense of rest and respite. A modern kitchen boasts a caesar stone breakfast bar and looks out onto the living area and courtyard. Just opposite the property is a children's day care, as well as a stroll to the local cafe and parks. You'll

**Type** : House  
**Price** : \$ 650,000  
**Land Size** : 224 sqm  
**View** : <https://www.thriverealestate.com.au/sale/wa/southern-suburbs/hammond-park/residential/house/8088869>



**Derick Pitt**  
08 9414 9440

[For full version visit the website](https://www.thriverealestate.com.au)



**SITE PLAN**  
(NOT TO SCALE)