

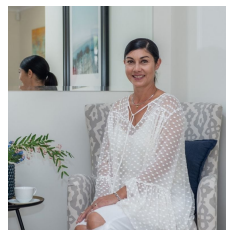


**36 Silvertop Terrace Willetton WA**

4 🚗 2 🚗 6 🚗

Welcome to your own slice of paradise right here in the Heart of Willetton. A Beautifully presented family home with Spectacular Kitchen and surrounded by immaculate tropical gardens and manicured lawns. Lucky new owners will indulge in spacious living for the whole family, comfortable living for parents with Very Large master bedroom, renovated en-suite and Super relaxing courtyard, plus all year round entertaining, and for the kids with large activity / games room or additional bedroom (or even home office!!). With additional parking on 2 street fronts, luxurious Alfresco plus parent retreat, this exquisite home will appeal to many. A lovely corner block zoned R20, (Potential Subdivision capabilities (subject to WAPC and Council Approvals) in an exceptionally convenient location close to schools, parks, shopping and transport and plenty of extras!!!. Features include;

**Price** : \$ 1,100,000  
**Land Size** : 710 sqm  
**View** : <https://www.thriverealestate.com.au/sale/wa/southern-suburbs/willetton/residential/house/6939674>



**Karen Tucek**  
**08 9414 9440**